



PATRICK BRAUN

HEIGHT 188 - 6' 2"

CHEST 95 - 38"

WAIST 73 - 28"

HIPS 95 - 38"

SHOES 44 - 10 1/2

HAIR BIONDI - BLONDE

EYES AZZURRI - BLUE





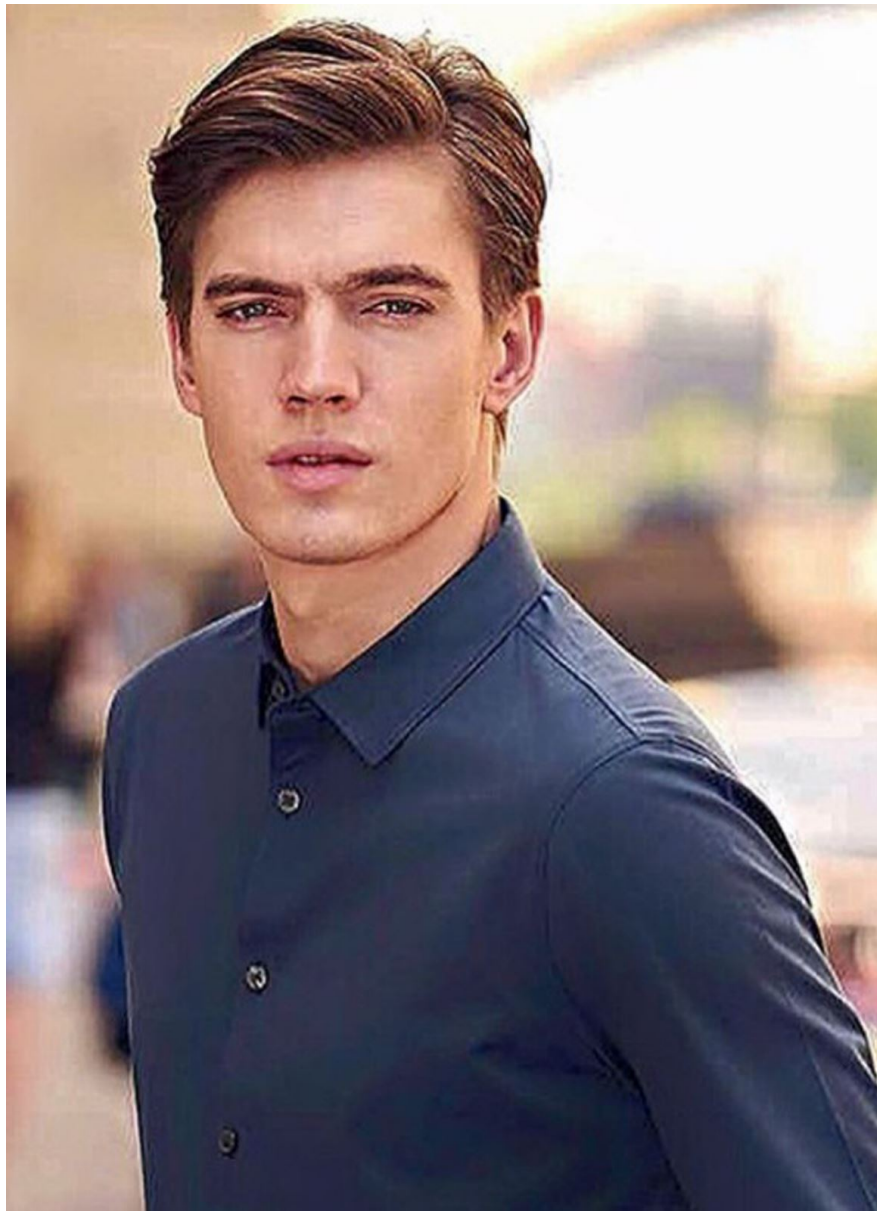






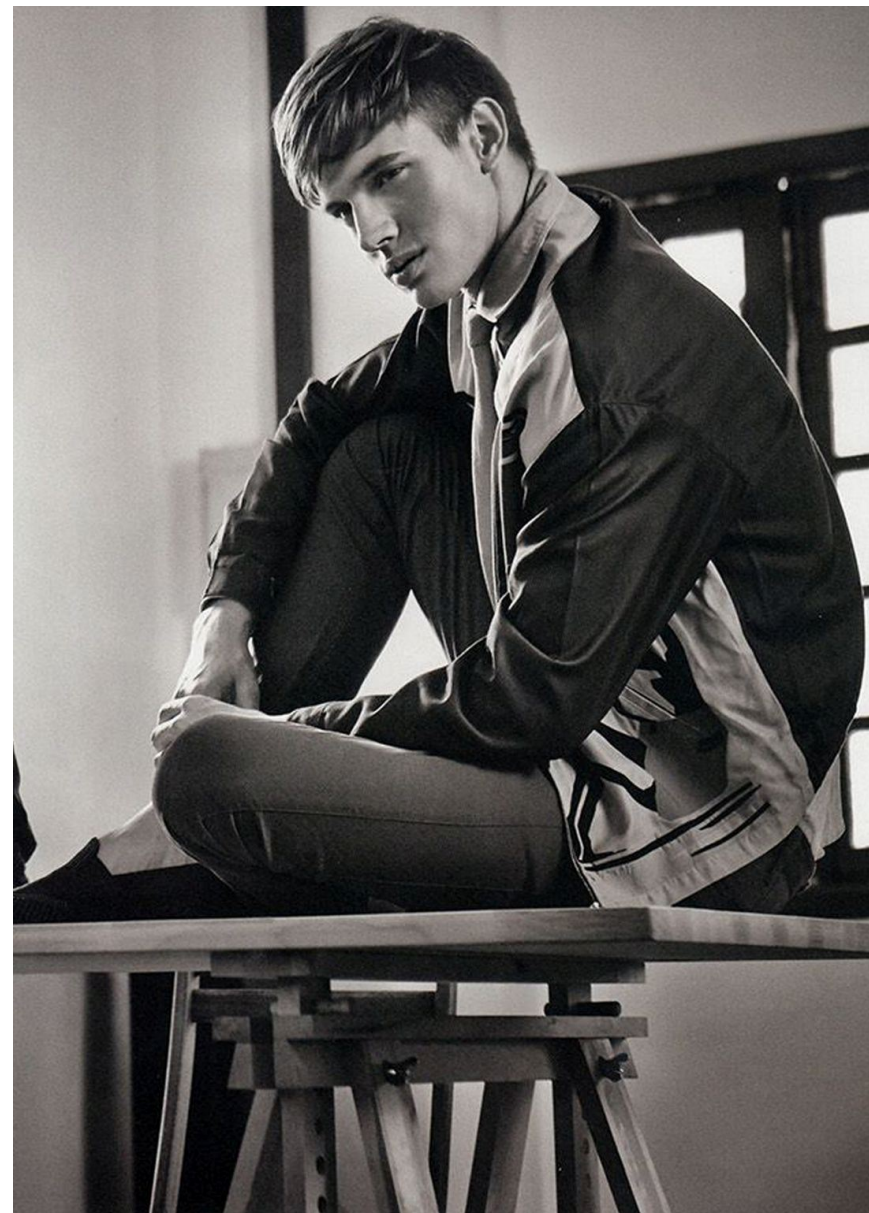








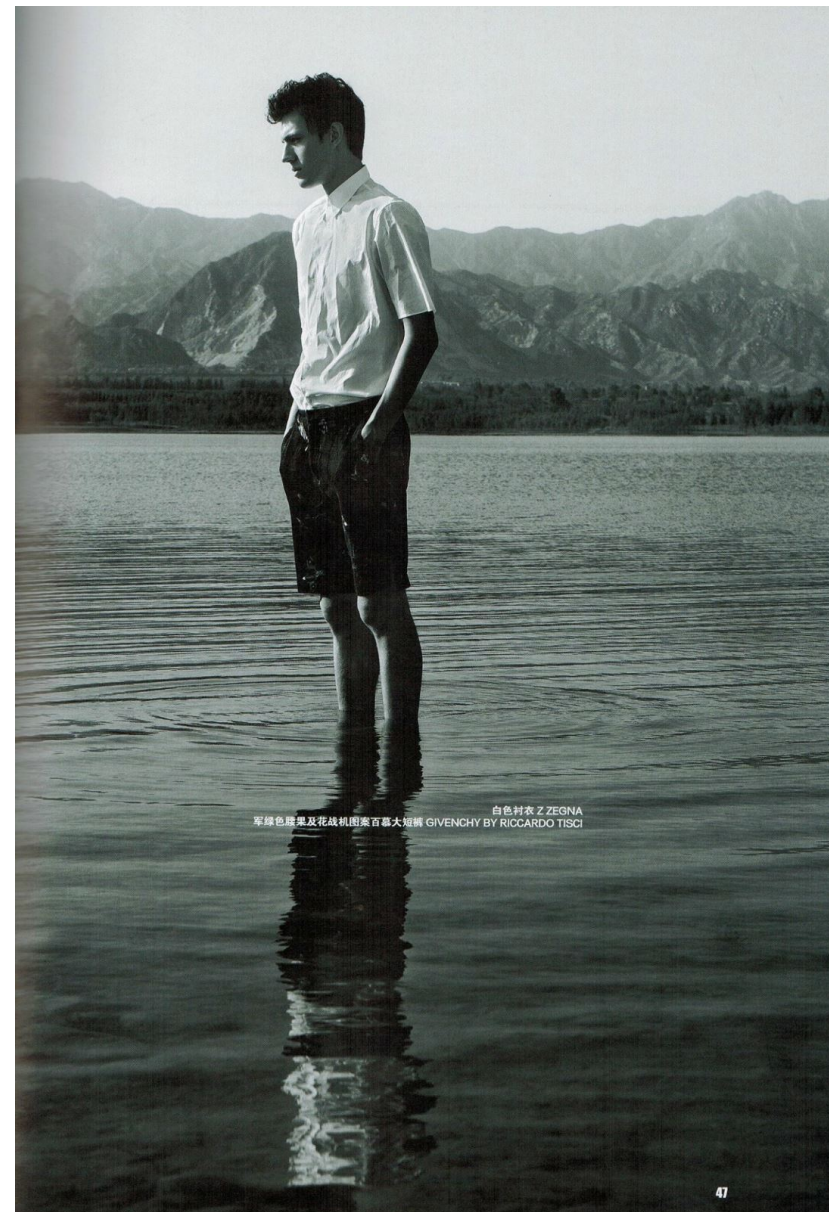
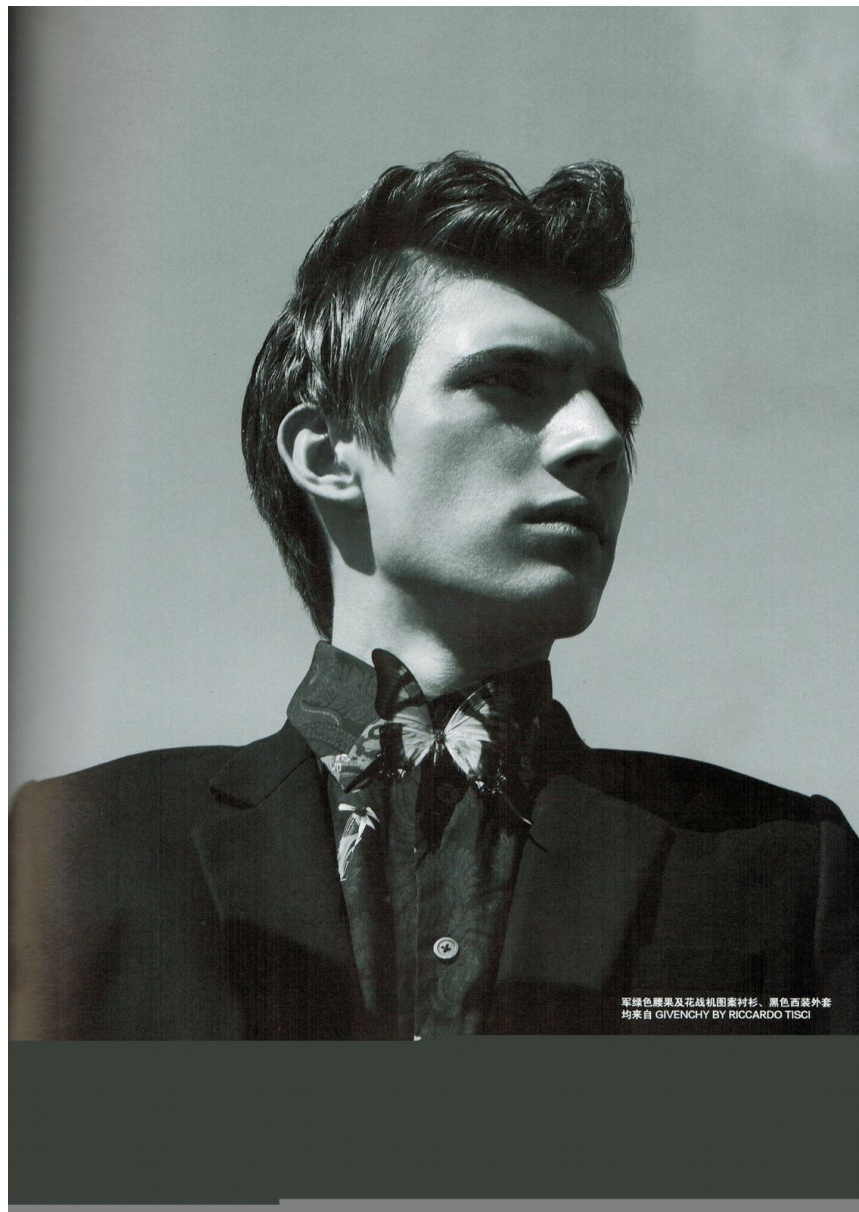














Designed by Mr.Bu.All Rights Reserved.



DESIGN FEATURES









