



DOUGLAS JOSEPH

HEIGHT 187 - 6' 1.5"

CHEST 97 - 38"

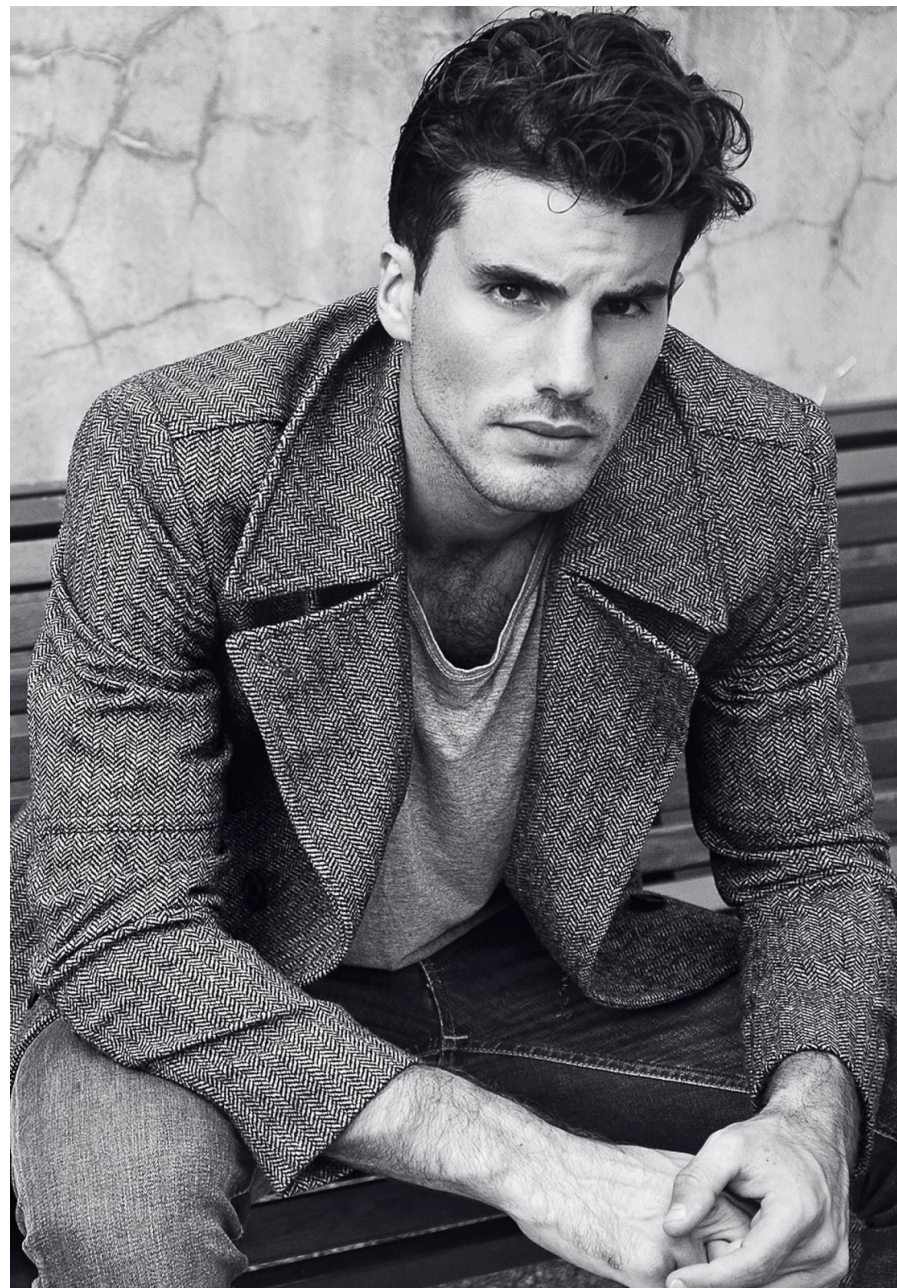
WAIST 81 - 32"

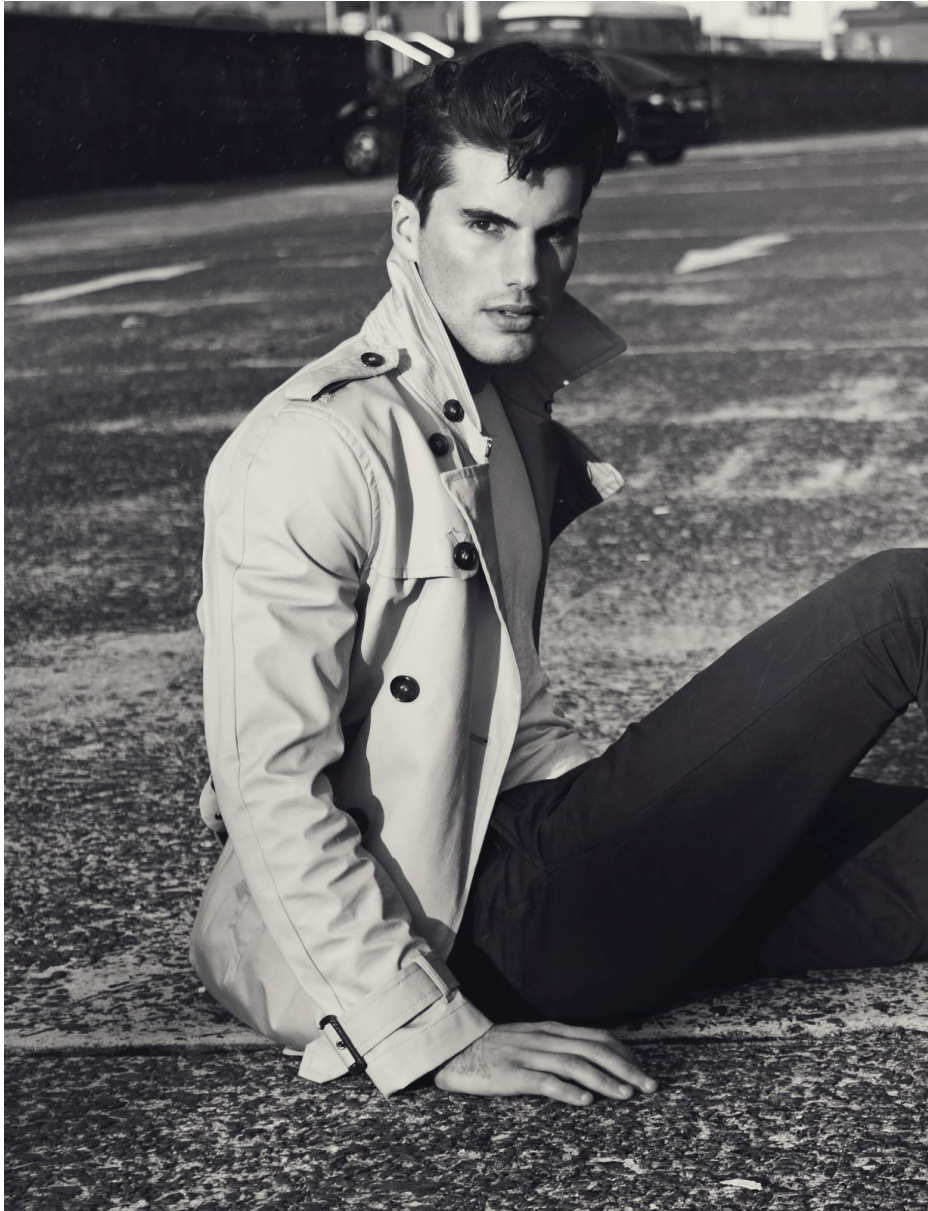
HIPS 94 - 37"

SHOES 44 - 10 1/2

HAIR CASTANO SCURO - DARK BROWN

EYES MARRONI - BROWN















THE MODERN GENTLEMAN

Stripes, checks and the final finishing flourishes,
your groom will cut a dashing figure
in these sharp looks. Good day indeed, Sir.

PHOTOGRAPHY: JASON TERACE
FASHION DIRECTION: ROSIE MCKAY

2013 bridgetobe.com.au

SABA "Colin" suit jacket, \$890, pants, \$220, and
"Anthony" shirt, \$175.
Brandon Fedora hat, \$120.
T.M. Lewin tie, \$19.95,
tie pin, \$44.95, and
pocket square, \$34.95.
Rado "Centrix Evolution"
watch, \$2275; Thomas
Saba signet ring, \$440.



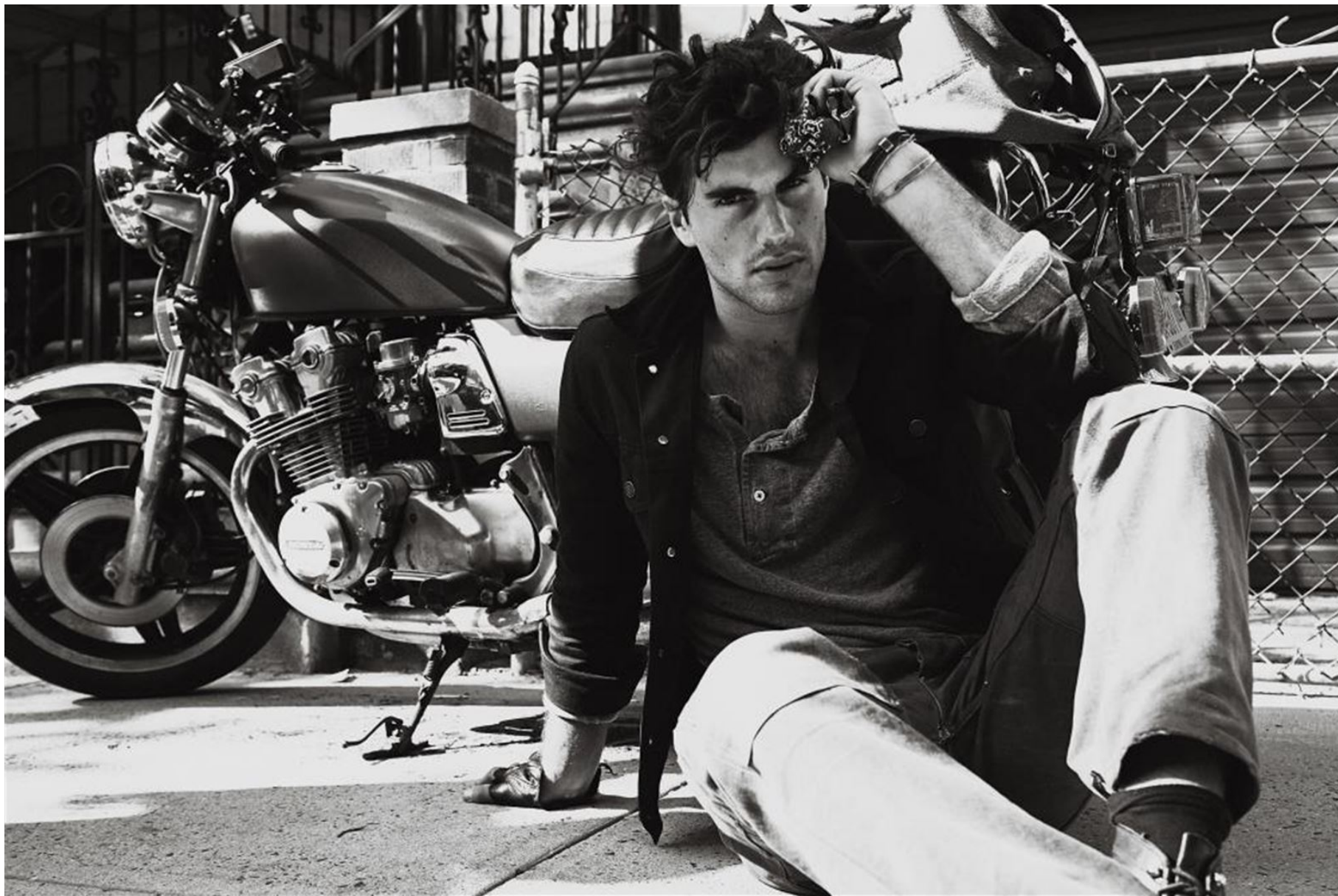




















Douglas "Dougie" Joseph
wears Benetton, \$395
Morgan wears an Eres bikini,
\$420, from Sylvia Rhodin,
Laguna & Swimwear

MARKUS LUTHE



