



MIAS VAN DER WESTHUYZEN

HEIGHT 188 - 6' 2"

CHEST 101 - 39"

WAIST 84 - 33"

HIPS 99 - 39"

SHOES 44 - 10 1/2

HAIR LIGHT BROWN - CASTANO CHIARO

EYES BLU - BLUE

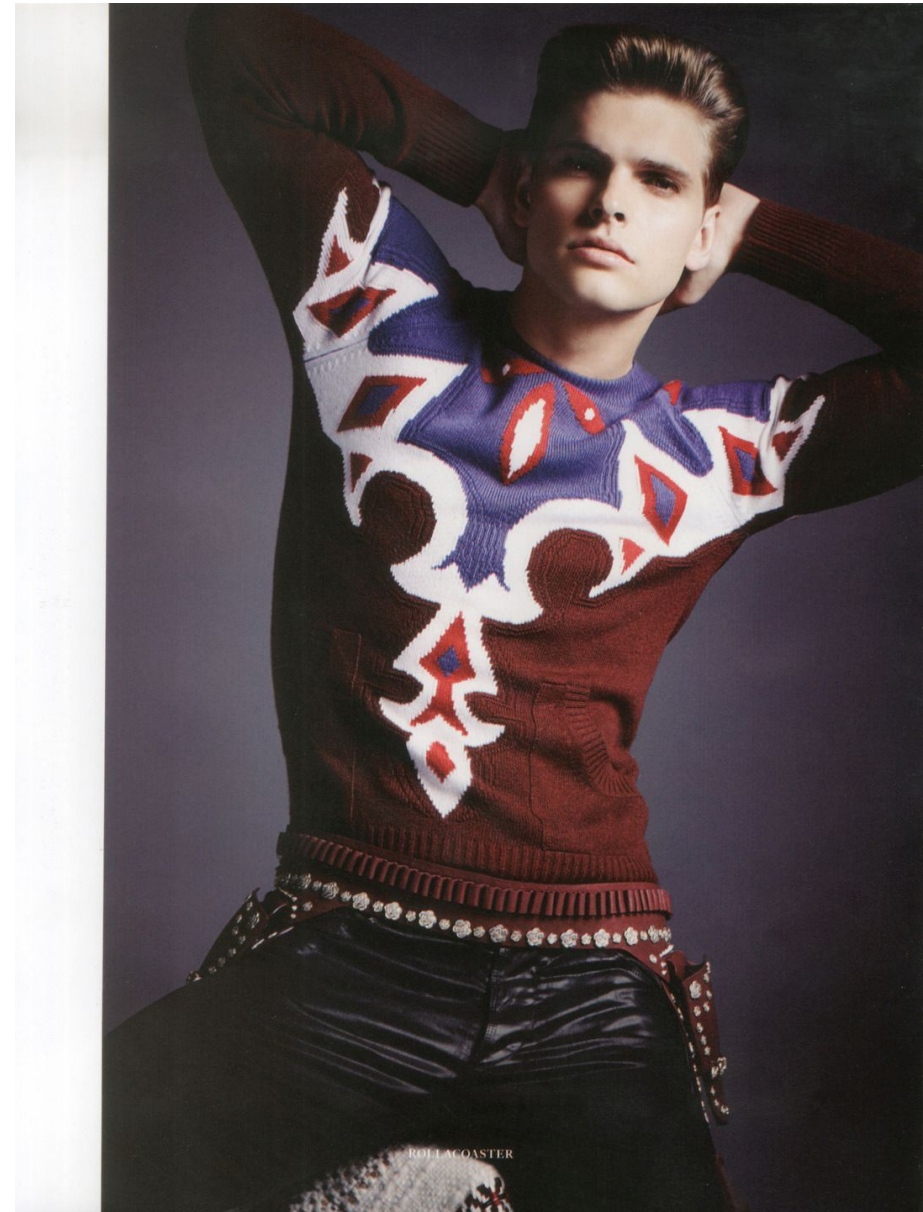


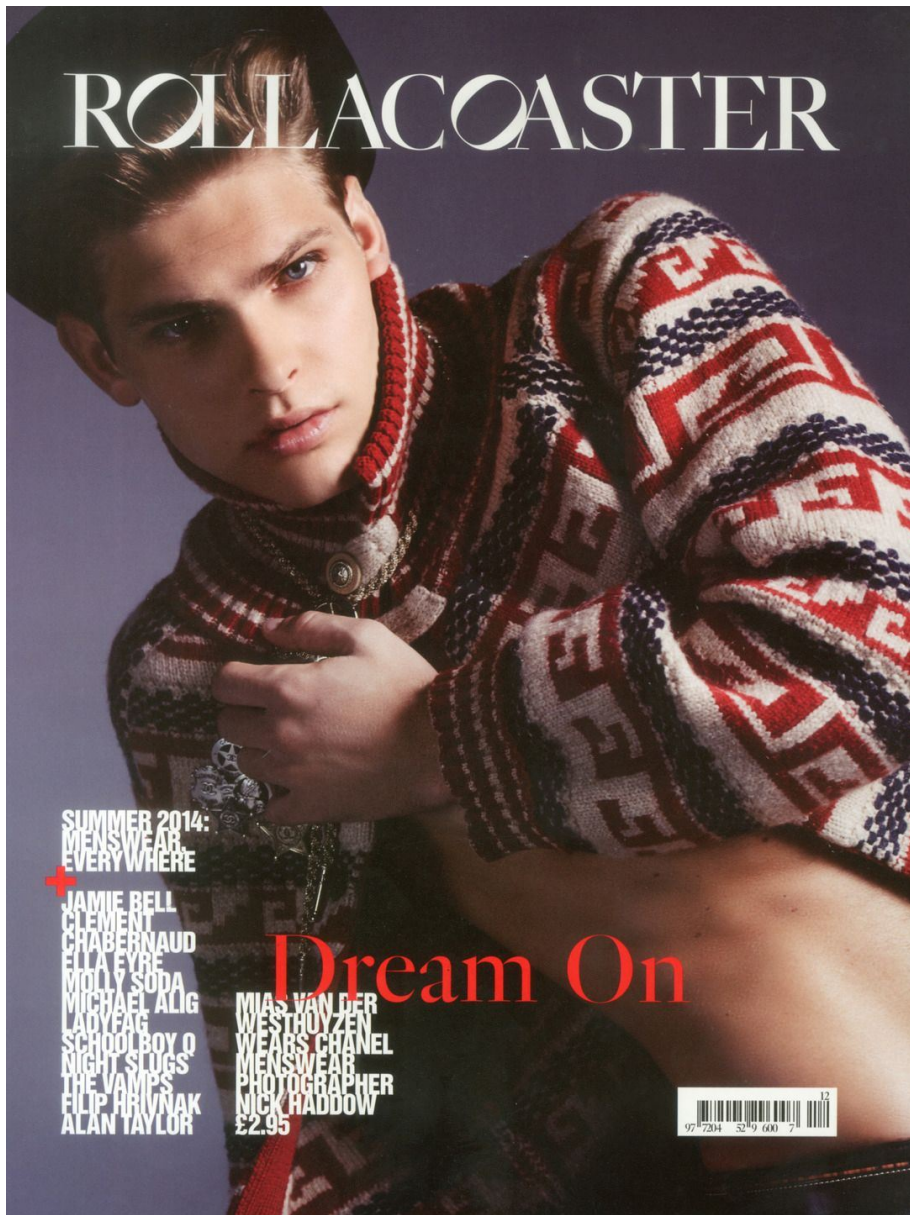


Men's Health

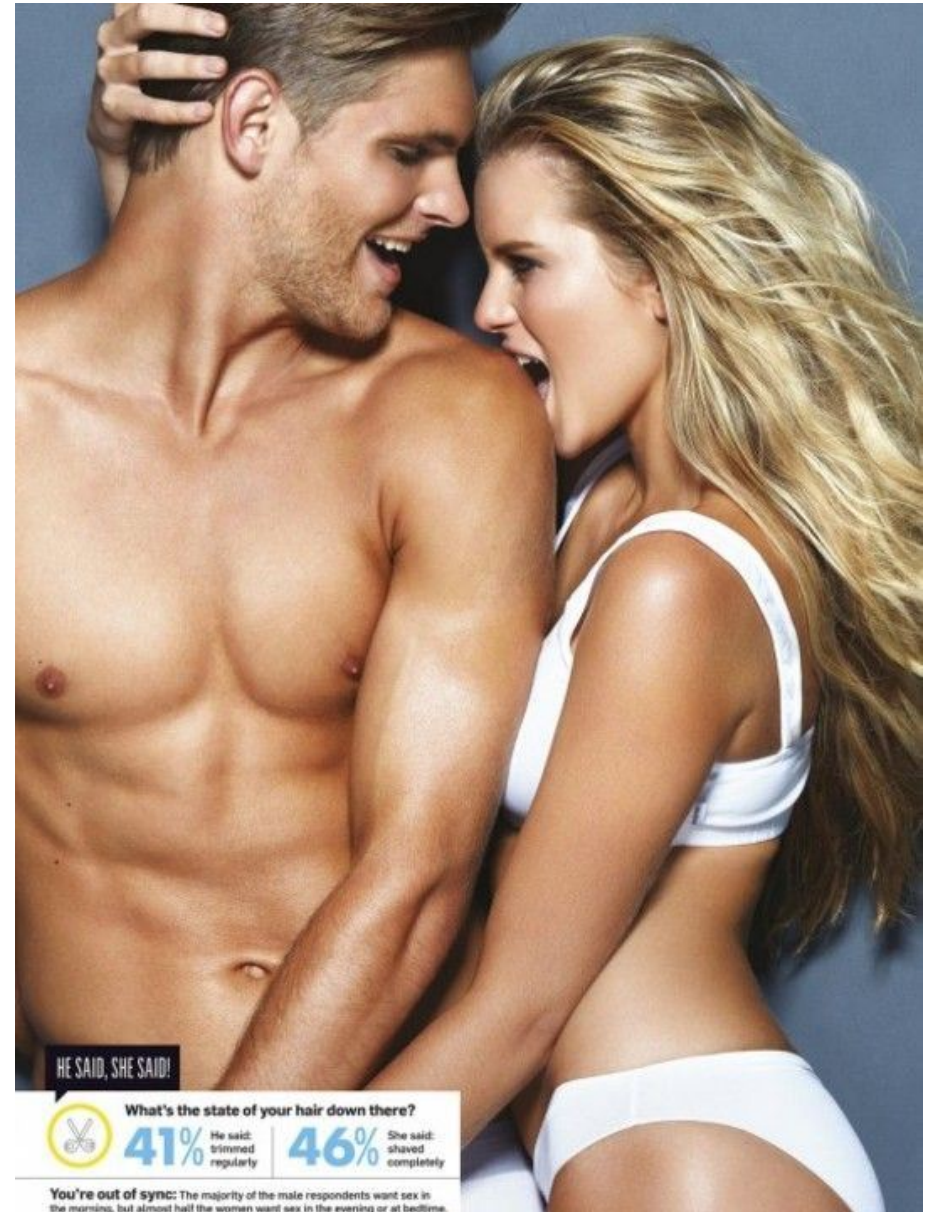
GUIDE
TO
STYLE

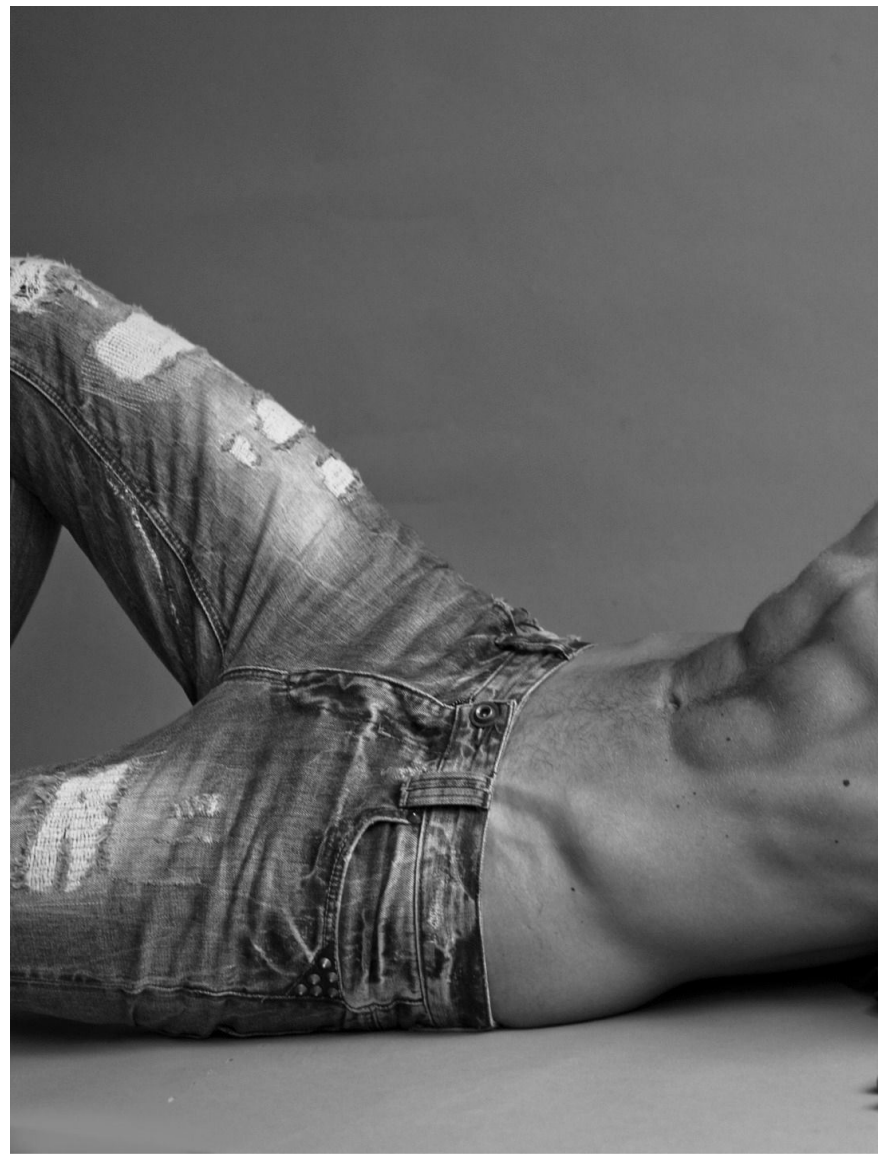
• • • AUTUMN 2015

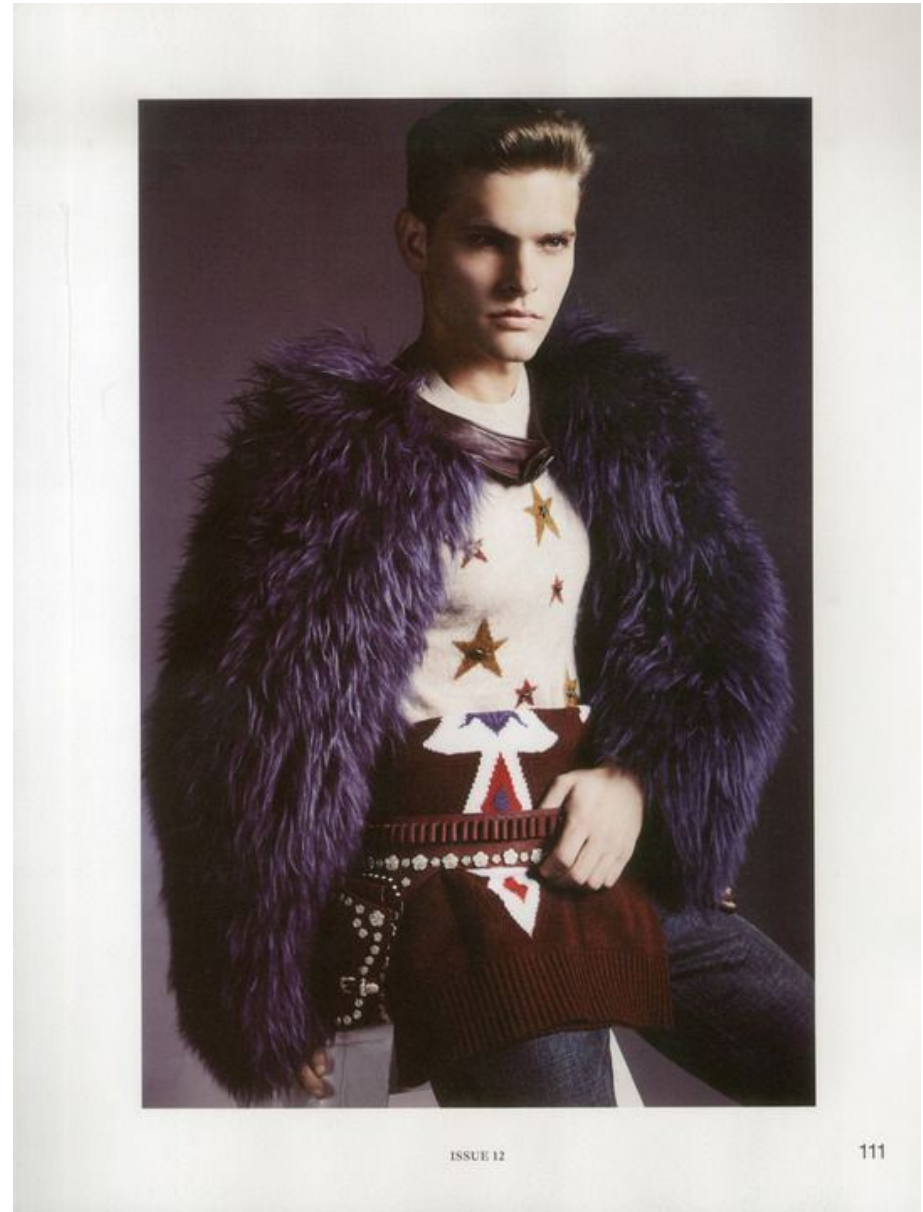






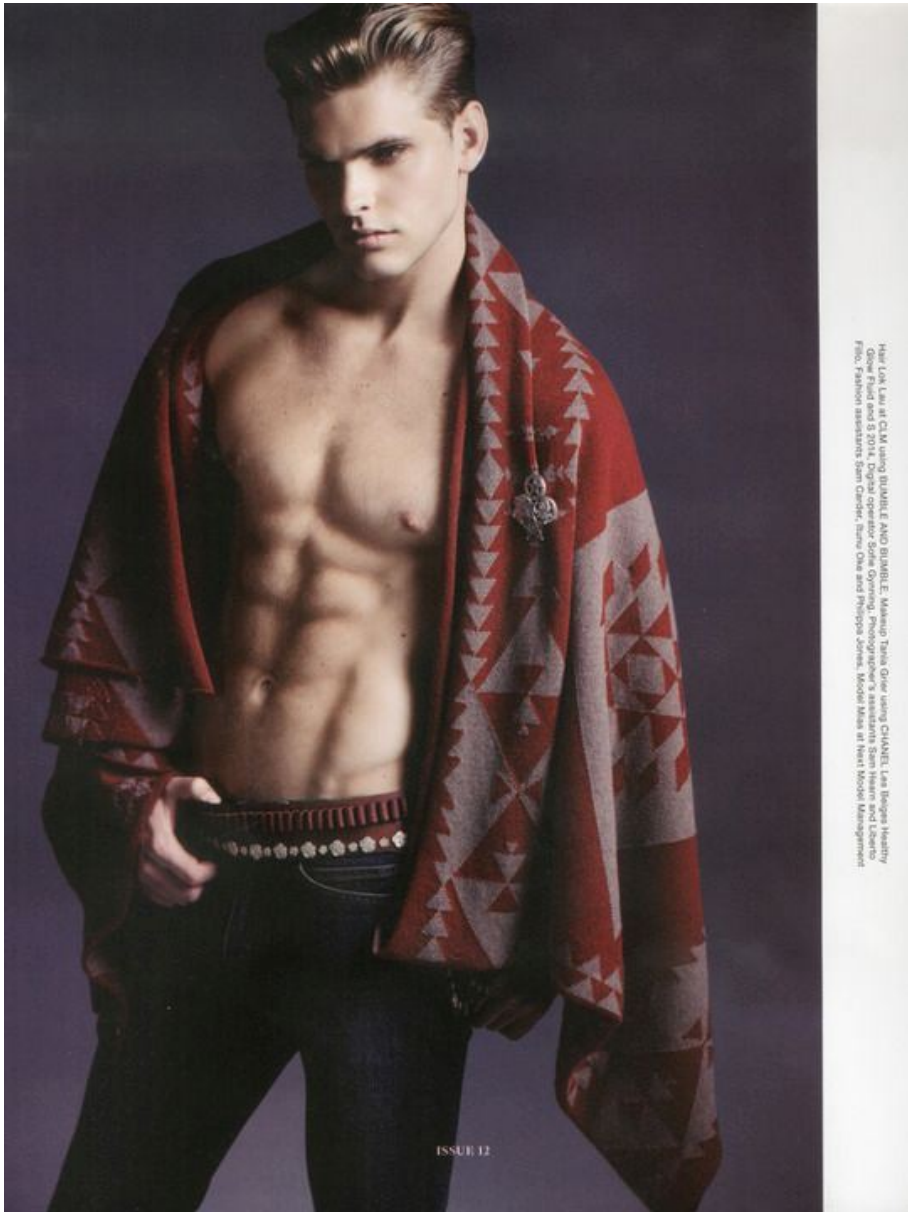






ISSUE 12

111



Hair: LAM LAM at C&M; Jacket: BILABE & AND BILABE; Makeup: TARA GUN-JUNG; CHANEL; L'Oréal; Healthy
 Skin: GARNIER; Underwear: CALVIN KLEIN; Shoes: PRADA; Photo: GUY AROCH; Photo Styling: SAM HARRIS and LUCAS
 FIO; Fashion assistants: SAM GARDNER, SIMON OAK and FELICIA ADAMS; Model: MIAS at MIAS Model Management

ISSUE 12



**NOT YOUR
GRANDPA'S TEE**

A Henley is a collarless T-shirt with a buttoned opening (your tailor calls it a "placket") below the neckline. In some ways it looks like your grandpa's undershirt - but that hardwearing, utilitarian edge is exactly why you should be wearing it. Get a long-sleeved, slightly faded (olive, navy and charcoal are good options) Henley that's a bit rough around the edges - and wear it under a denim shirt or jacket.

DOLCE & GABBANA AVIATORS
 #2 690 SUNGLASS HUT
 HENLEY #275 SOLD ROMA 1

PHOTOGRAPHY: ASSISTANT PHOTOGRAPHER MIAS AT BOSS; MODELS: GROOMING: DEJAN NAJDE AT PALLADIUM; HAIR: CO; FASHION ASSISTANT: ECKHART MOSTERT



THE DARK SECRET

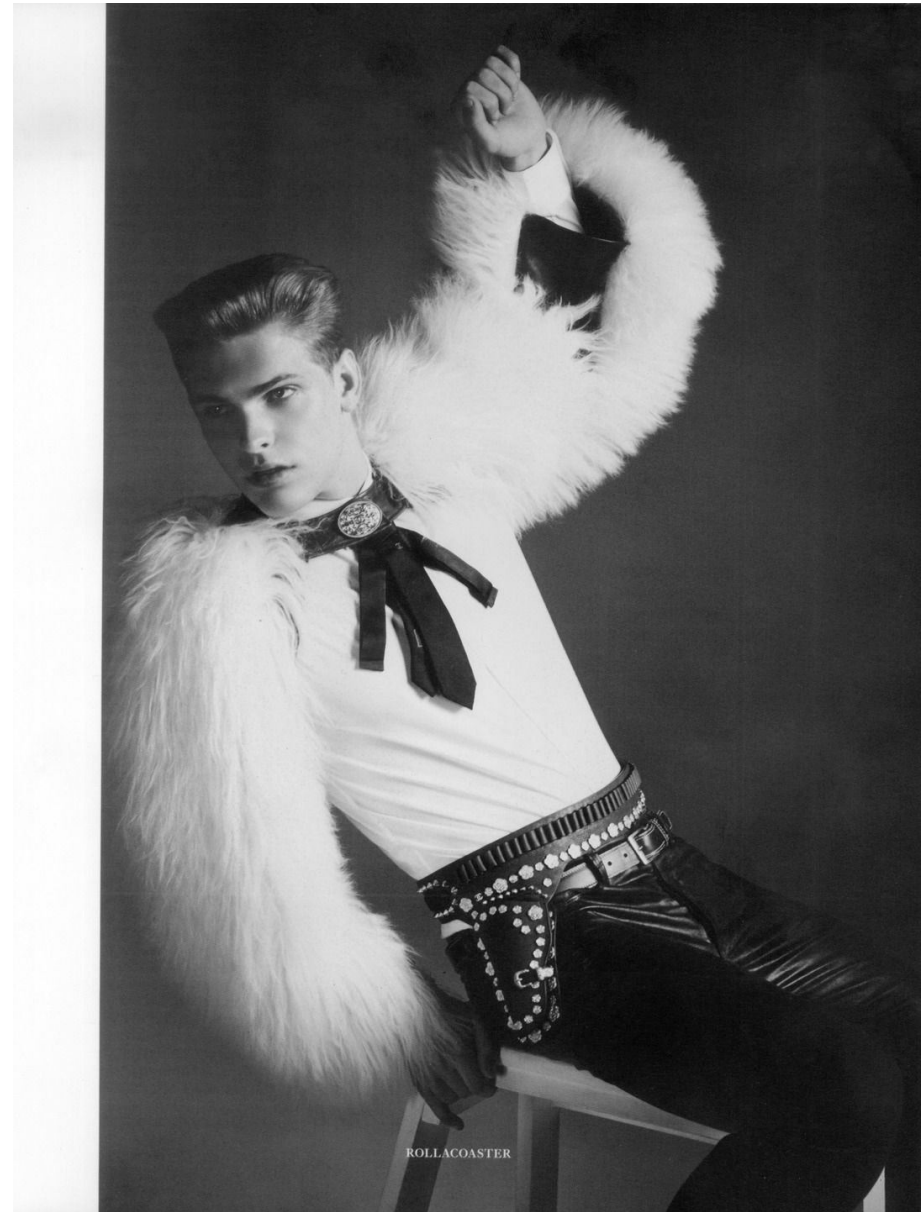
The secret to effortless style is, as the dictionary would tell you, not looking like you're trying too hard. For a zero effort with high style returns, try darker tones on your jeans and jacket. It'll remove the need for heavy layering, letting the clothes do all the work for you.

CANVAS LEATHER JACKET
R5 299 DIESEL
V-NECK T-SHIRT R169 LEE
BRIT ROCKER SIRIUS WASH
DENIM R899 GUESS
LUMINOX ATACAMA FIELD WATCH
R3 387 DR SUTHERLAND

MARCH 2012 163





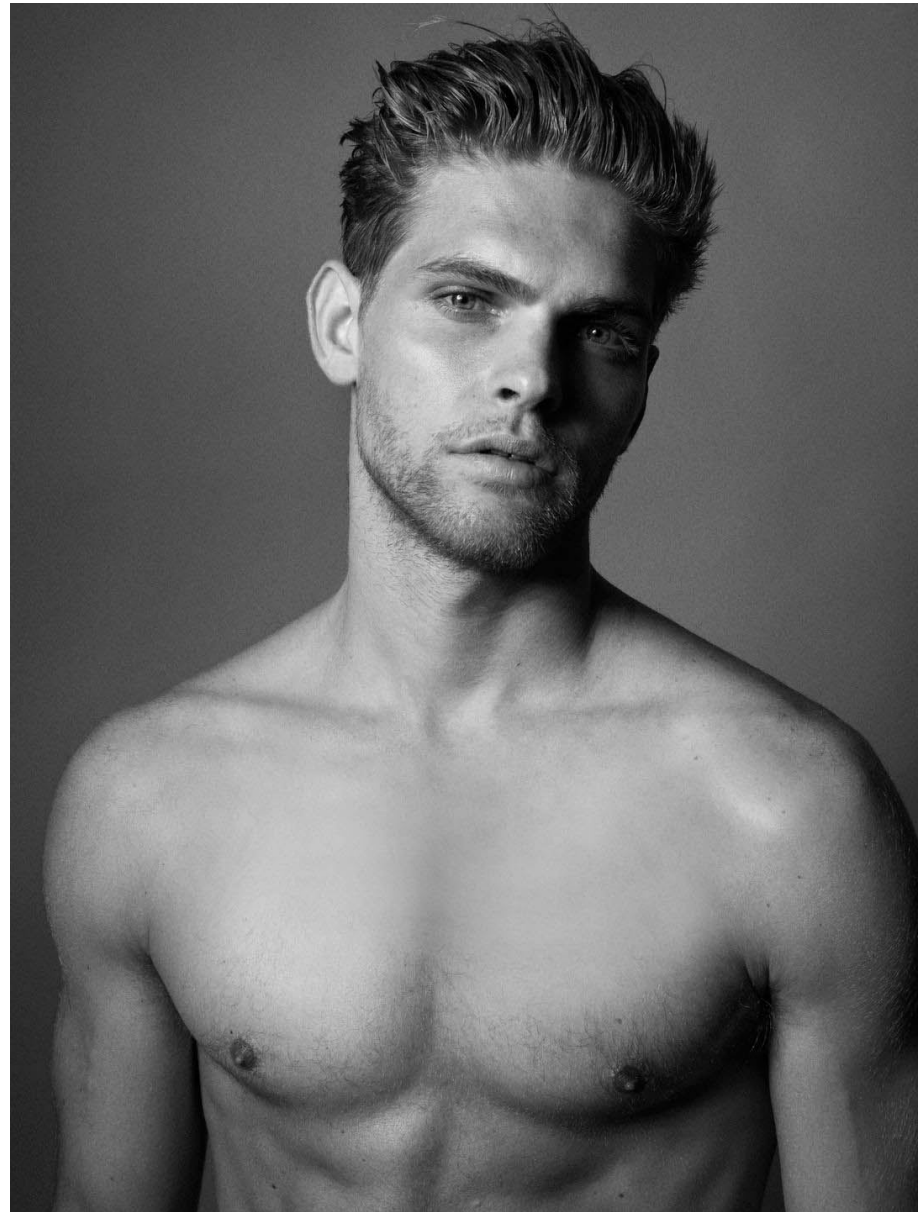




ISSUE 12







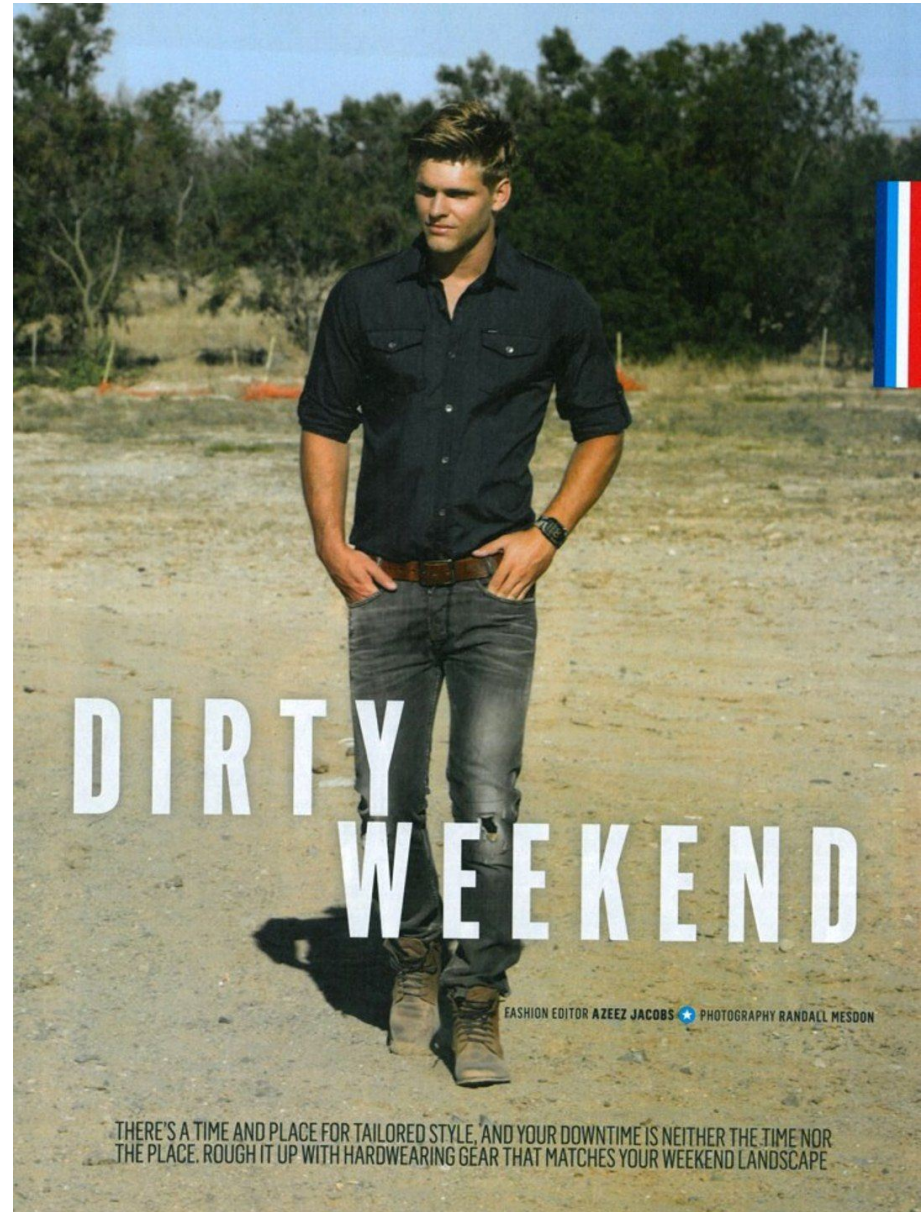




CARGO CULT

Cargo pants are always the go-to option for rugged outdoor wear. Feel free to rough them up a bit (just like you do with your jeans), but avoid a loose, baggy fit; it will only make you look sloppy. Wear it right by getting a pair with tapered legs, and earthy, Indiana Jones brown or green colours.

PRADA AVIATORS #2 300 LINGOTTICA
LEATHER JACKET #4 400 TIMBERLAND
CREW NECK T-SHIRT #2 25 OLD KHAKI
CARGO PANTS #2 500 REPLAY
GRIFFFIN MID CALF LEATHER BOOTS
#700 OLD KHAKI



DIRTY WEEKEND

FASHION EDITOR AZEEZ JACOBS • PHOTOGRAPHY RANDALL MESDON

THERE'S A TIME AND PLACE FOR TAILORED STYLE, AND YOUR DOWNTIME IS NEITHER THE TIME NOR THE PLACE. ROUGH IT UP WITH HARDWEARING GEAR THAT MATCHES YOUR WEEKEND LANDSCAPE

