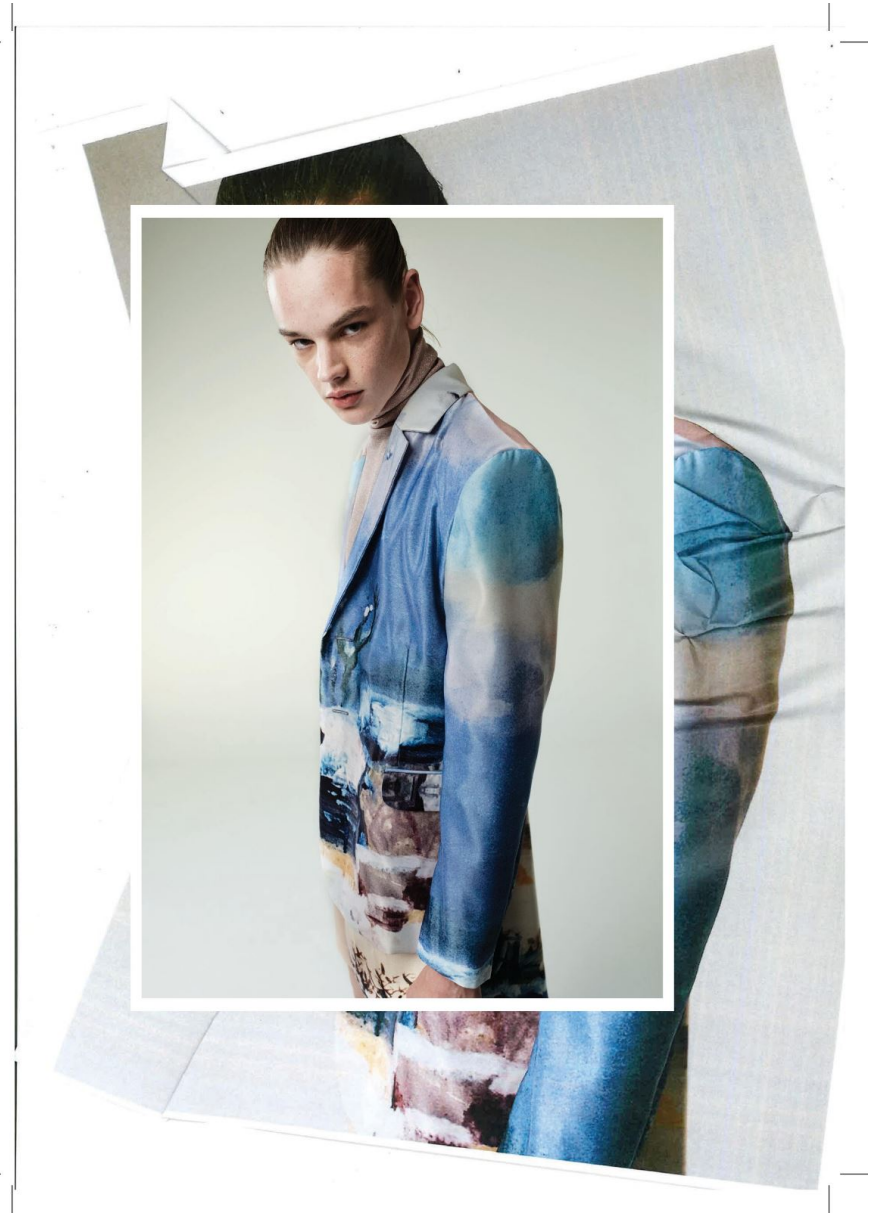


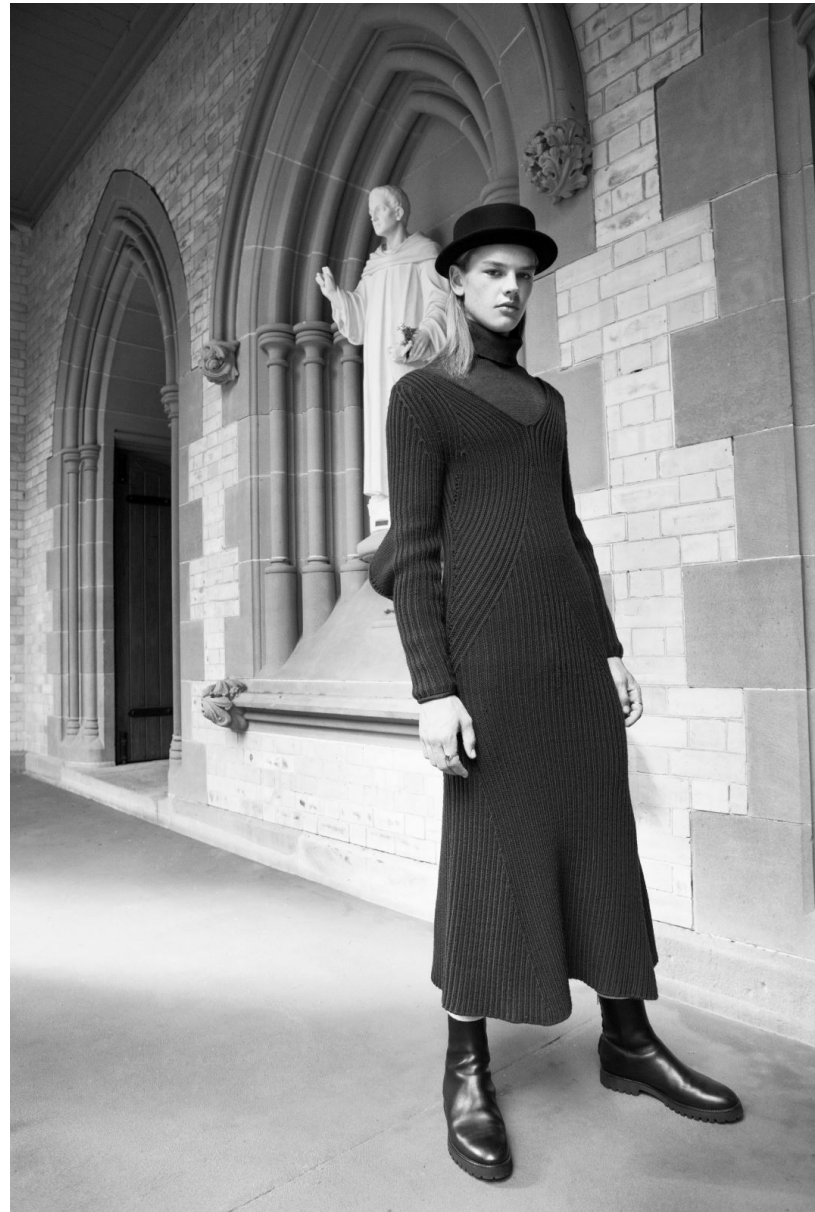


DARCY

HEIGHT 189 - 6' 2"
CHEST 86 - 34"
WAIST 70 - 27"
HIPS 88 - 35"
SHOES 45 - 11
HAIR BLONDE
EYES BLUE









Wool-blend intarsia
jumper and fringed
polyester-blend
ski pants

OPPOSITE
Tie-dyed cable knit
turtleneck and padded
cotton corduroy trousers

Grooming - hair:
Wee Ming using **Chanel
Beauty** - **Kevin Murphy**
Photographic
assistance: **Yann Cloitre**
Styling assistance:
Bryan Ho - **Louis**
Models: **Darcy M/AVE**





