



MARVIN KIVISALU

HEIGHT 186 - 6' 1"

CHEST 84 - 33"

WAIST 66 - 26"

HIPS 89 - 35"

SHOES 43 - 9 1/2

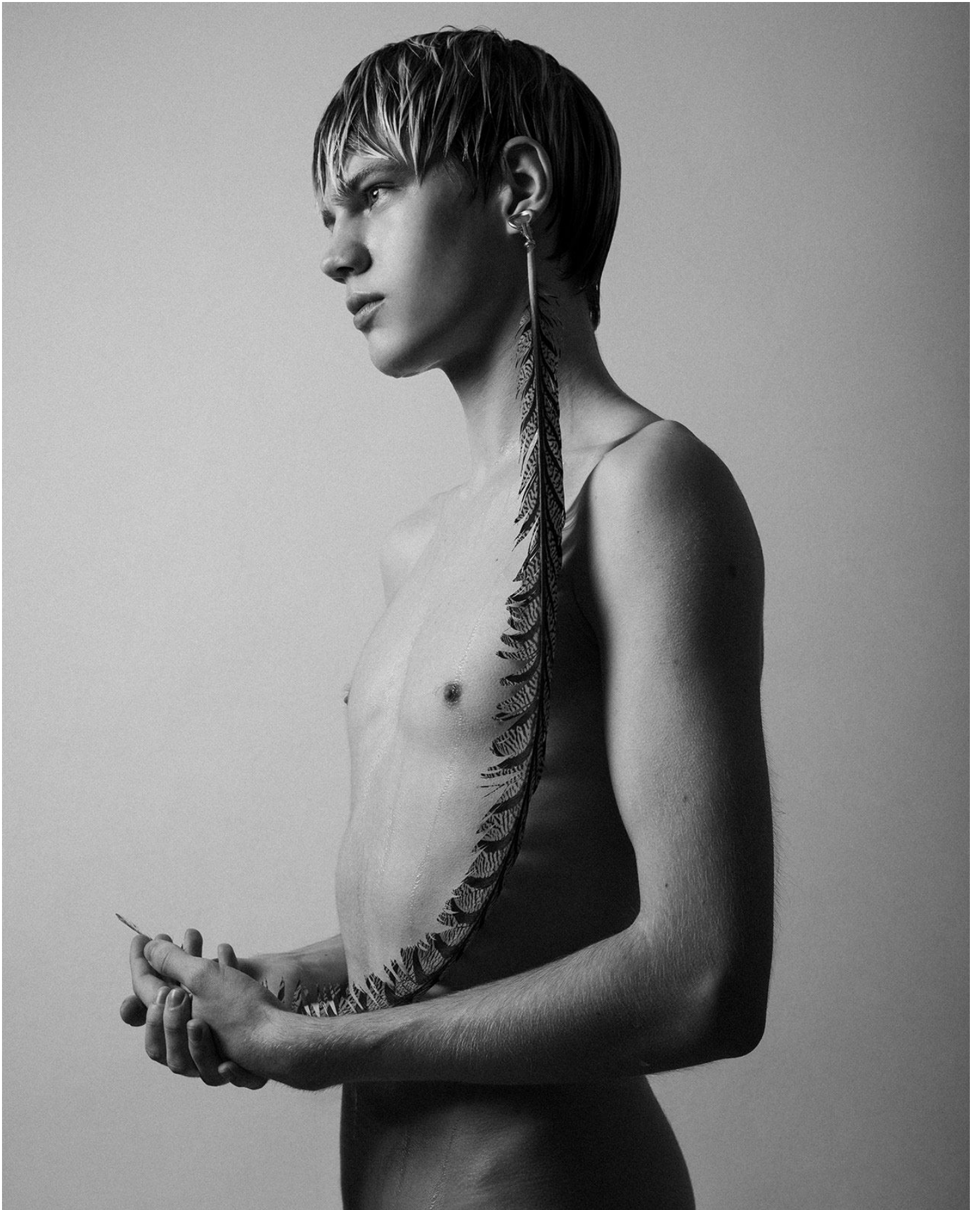
HAIR LIGHT BROWN

EYES LIGHT BLUE- BLU CHIARI





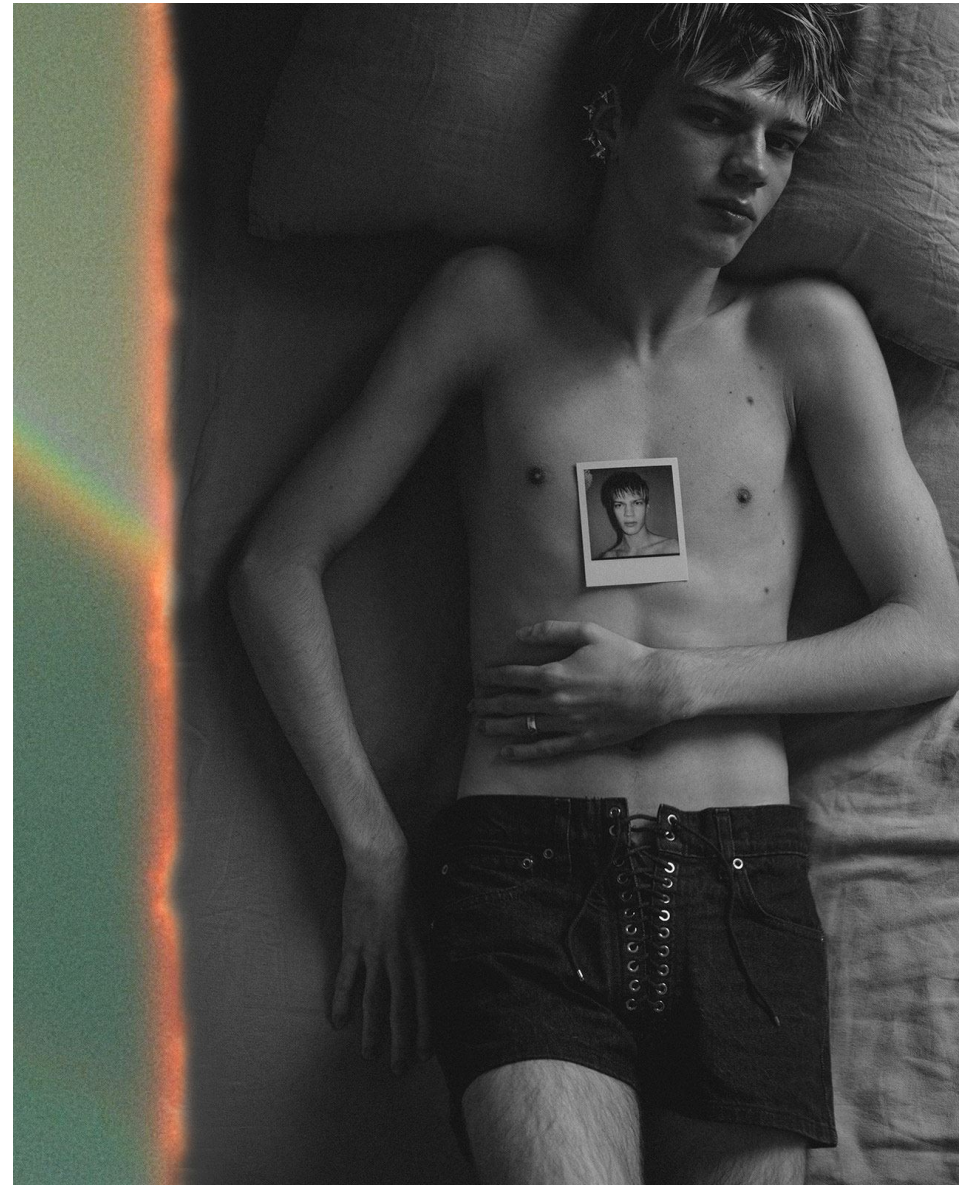














Cappotto in pelliccia sintetica.
Marciano Guess:
camicia, **Canali**;
pantaloni, **PT Torino**;
calze, **Alto Milano**.



Giaccone impermeabile con cappuccio.
Geox Respira:
piumino,
2 Moncler 1952 Man.



