



TAAVI MAND

HEIGHT 187 - 6' 1.5"

CHEST 89 - 35"

WAIST 74 - 29"

HIPS 91 - 36"

SHOES 43 - 9 1/2

HAIR CASTANO CHIARO - LIGHT BROWN

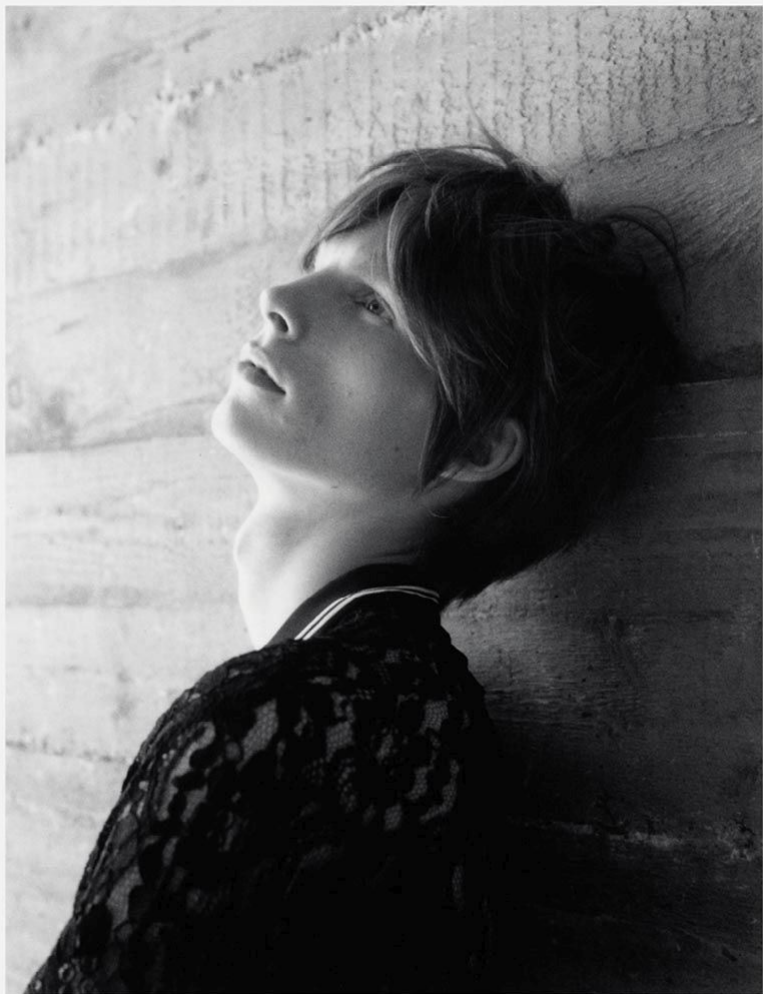
EYES VERDI - GREEN







Jacket and Trousers JIL SANDER - Belt PAUL SMITH - Sunglasses SAINT LAURENT BY HEDI SLIMANE
Opposite Page Shirt and Trousers LANVIN - Belt PAUL SMITH - Sunglasses SAINT LAURENT BY HEDI SLIMANE



Shirt MSGM
Opposite Page Jacket and Trousers COACH - Sunglasses SAINT LAURENT BY HEDI SLIMANE



Fur PAUL SMITH - Sunglasses SAINT LAURENT BY HEDI SLIMANE - Boots GUGLIELMO CAPONE
Opposite Page Shirt and Trousers GUCCI - Belt PAUL SMITH



3

PHOTO LAURA SCIACOVELLI
FASHION EDITOR NIK PIRAS

MODEL TAAVI MAND – 2MORROW MODEL MANAGEMENT
GROOMING ARMANDO CHERILLO – ATOMO MANAGEMENT USING ORIBE HAIR CARE







GUCCI



Trench BOSS - Pajamas BRIONI - Sunglasses SAINT LAURENT BY HEDI SLIMANE
Opposite Page Sunglasses SAINT LAURENT BY HEDI SLIMANE



TAAVI MAND Robe longue en maille. Disquard2. Top en coton sanglé. J.V.Anderson. Bottines à plateFormes. Acne Studios.

ANTIDOTE

